

# PRODUCT INDEX





# Contents

## **Zero-Point Clamping** **04**

---

Quick·Point® Zero-Point Clamping System 06

---

## **Workholding** **10**

---

Makro·Grip® Stamping Technology 12

---

Makro·Grip® Raw Part Clamping 14

---

Makro·Grip® Ultra 16

---

Conventional Workholding 18

---

## **Automation** **20**

---

RoboTrex Automation 22

---

Clean·Tec Chip Fan 23

---



**LANG**

Makro-Grip®

5-Achs-Spanner  
Art. Nr. 48155-125

Zu  
Close

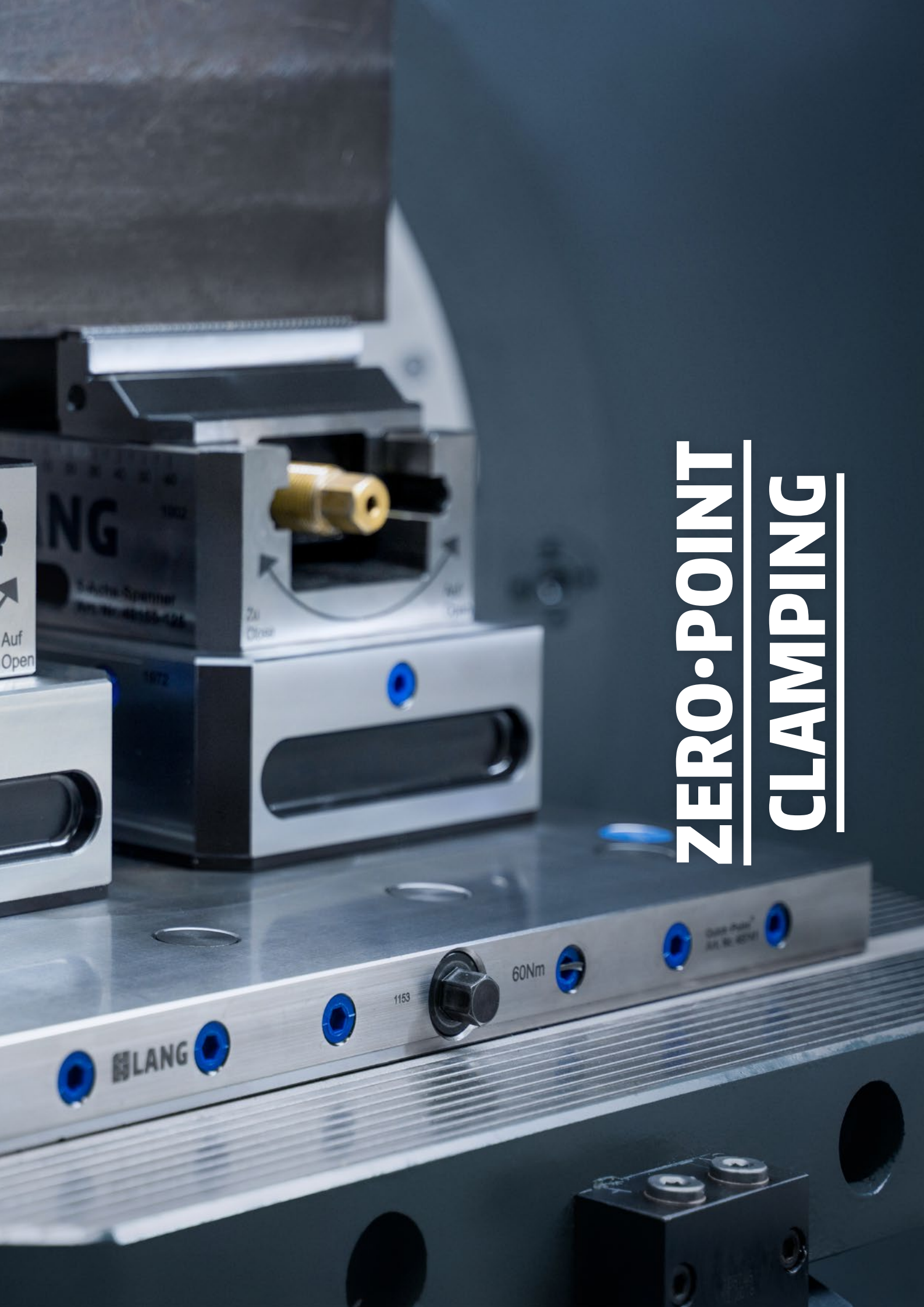
**LANG**

Quick-Point®

5-Achs-Erhöhung  
Art. Nr. 45406

**LANG**

# ZERO-POINT CLAMPING



# Quick-Point® Zero-Point Clamping System

## QUICK-POINT® SINGLE PLATES



ITEM NO.	GRID	DIMENSIONS	MOUNTING BORES	SUITABLE QUICK-LOCK	SUITABLE VICE SIZE*
45600	52	104 × 104 × 27 mm	-	44552	77
75600	52	104 × 104 × 27 mm	82 × 82 mm (for Quick-Tower & MT3 / MT4)	44552	77
45710	96	192 × 192 × 27 mm	-	44596	125
75710	96	192 × 192 × 27 mm	150 × 120 mm (for Quick-Tower)	44596	125
45763	96	192 × 192 × 27 mm	for 63 mm T-slot distance	44596	125
45863	96	Ø 246 × 27 mm	for 63 mm T-slot distance	-	125
45715	96	246 × 192 × 27 mm	for 100 mm T-slot distance	44596	125
45716	96	246 × 192 × 27 mm	-	44596	125
45150	52	150 × 116 × 27 mm	100 × 50 mm	44552	77
45151	52	150 × 116 × 27 mm	-	44552	77
45400	96	192 × 156 × 27 mm	150 × 100 / 50 mm	44596	125
45401	96	192 × 156 × 27 mm	-	44596	125
45750	52	Ø 116 × 27 mm	96 mm distance	-	77
45751	52	Ø 116 × 27 mm	-	-	77
45900	52	Ø 157 × 27 mm	100 mm distance	-	77
45901	52	Ø 157 × 27 mm	-	-	77
45800	96	Ø 176 × 27 mm	for 63 mm T-slot distance	-	125
45801	96	Ø 176 × 27 mm	-	-	125
45820	96	Ø 196 × 27 mm	-	-	125
45840	96	Ø 246 × 27 mm	-	-	125
45890	96	Ø 246 × 27 mm	4 × 90°	-	125

## QUICK-POINT® SINGLE PLATES FOR INDIVIDUAL CENTRE BORE



ITEM NO.	GRID	DIMENSIONS	CENTRE BORE	SUITABLE VICE SIZE*
45903	52	Ø 157 × 27 mm	max. Ø 38 mm	77
45803	96	Ø 176 × 27 mm	max. Ø 80 mm	125
45823	96	Ø 196 × 27 mm	max. Ø 80 mm	125
45843	96	Ø 246 × 27 mm	max. Ø 80 mm	125

\* BASE WIDTH

**QUICK-POINT® MULTI PLATES**

ITEM NO.	GRID	TYPE	DIMENSIONS	MOUNTING BORES	SUITABLE QUICK-LOCK	SUITABLE VICE SIZE*
45621	52	2-fold	208 × 104 × 27 mm	186 × 82 mm	45252	77
45640	52	4-fold	208 × 208 × 27 mm	-	45452	77
45641	52	4-fold	208 × 208 × 27 mm	for 63 mm T-slot distance	45452	77
45720	96	2-fold	384 × 192 × 27 mm	-	45296	125
45962	96	2-fold	∅ 384 × 27 mm	-	45996	125
45963	96	2-fold	∅ 384 × 27 mm	for 63 mm T-slot distance	45996	125
45964	96	2-fold	∅ 384 × 27 mm	for 100 mm T-slot distance	45996	125
45740	96	4-fold	384 × 384 × 27 mm	-	45496	125
45741	96	4-fold	384 × 384 × 27 mm	for 63 mm T-slot distance	45496	125
45742	96	4-fold	384 × 384 × 27 mm	for 100 mm T-slot distance	45496	125

**QUICK-POINT® ADAPTOR PLATES**

ITEM NO.	TOP GRID	BOTTOM GRID	DIMENSIONS	SUITABLE QUICK-LOCK	SUITABLE VICE SIZE*
45160	52	96	150 × 126 × 27 mm	44552	77
45910	52	96	∅ 157 × 27 mm	-	77

**QUICK-POINT® 5-AXIS RISERS**

ITEM NO.	GRID	DIMENSIONS	SUITABLE QUICK-LOCK	SUITABLE VICE SIZE*
45156	52	150 × 116 × 60 mm	44552	77
45157	52	150 × 116 × 100 mm	44552	77
45406	96	192 × 156 × 60 mm	44596	125
45407	96	192 × 156 × 100 mm	44596	125

**QUICK-POINT® RISERS**

ITEM NO.	GRID	DIMENSIONS	SUITABLE QUICK-POINT® PLATE	SUITABLE VICE SIZE*
43060	52	150 × 116 × 60 mm	45150	77
43100	52	150 × 116 × 100 mm	45150	77
44060	96	192 × 156 × 60 mm	45400	125
44100	96	192 × 156 × 100 mm	45400	125
44006	96	∅ 176 / 246 × 60 mm	45800	125
44010	96	∅ 176 / 246 × 100 mm	45800	125

**QUICK-POINT® 3-FACE PYRAMID**

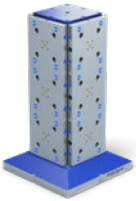
ITEM NO.	TOP GRID	BOTTOM GRID	DIMENSIONS	SUITABLE VICE SIZE*
43400	96	96	∅ 400 × 150 mm	125

**QUICK-POINT® TWIN BASES**

ITEM NO.	TOP GRID	BOTTOM GRID	DIMENSIONS	SUITABLE VICE SIZE*
47220	52	52	146 × 76 × 168 mm	77
47520	96	96	192 × 116 × 247 mm	125

**QUICK-POINT® TOMBSTONES**

ITEM NO.	TYPE	BOTTOM GRID	DIMENSIONS	MOUNTING
70263	3-face tombstone	96	192 × 192 × 260 mm	6 × 75600 or 3 × 45621
70264	4-face tombstone	96	192 × 192 × 260 mm	8 × 75600 or 4 × 45621

**QUICK-TOWER**

ITEM NO.	BASE GRID	BASE DIMENSIONS	SIDE FACES	HEIGHT	MOUNTING
70650	96	384 × 384 mm	192 × 192 mm	668 mm	max. 5 × 75600 on each side or max. 3 × 75710 on each side
70850	96	384 × 384 mm	192 × 192 mm	860 mm	max. 7 × 75600 on each side or max. 4 × 75710 on each side

**QUICK-TOWER BASE PLATES**

ITEM NO.	DIMENSIONS	THROUGH HOLE	MOUNTING BORES
70005	396 × 396 × 27 mm	Ø 50H7	-
70008	446 × 446 × 27 mm	Ø 50H7	12 × M16 (distance 200 mm)

**QUICK-POINT® SUPPORT PLATES**

ITEM NO.	GRID	DIMENSIONS	MATERIAL
45275	52	96 × 96 × 27 mm	Steel, black-oxide
45277	52	156 × 156 × 27 mm	Steel, black-oxide
45575	96	156 × 156 × 27 mm	Steel, black-oxide
45577	96	192 × 192 × 27 mm	Steel, black-oxide

**QUICK-LOCK FAST ACTUATION SYSTEM**

ITEM NO.	SUITABLE GRID SIZE	SUITABLE QUICK-POINT® DEVICES
44552	52	Single Plates, Twin Base, Receiver Plates, 5-Axis Risers
45252	52	2-fold Grid Plate
45452	52	4-fold Grid Plates
44596	96	Single Plates, Twin Base, Adaptor Plates, 5-Axis Risers
45296	96	2-fold Grid Plate
45996	96	2-fold Grid Plates, round
45496	96	4-fold Grid Plates

**QUICK-POINT® GAUGING PALLETS**

ITEM NO.	SUITABLE GRID SIZE	DIMENSIONS	MEASURING LENGTH
44252	52	96 × 96 × 56 mm	95 mm per Side
44296	96	126 × 126 × 56 mm	125 mm per side

**QUICK-POINT® ALIGNMENT GAUGES**

ITEM NO.	TYPE	SUITABLE GRID SIZE	MATERIAL	PURCHASE / RENT
44152	Alignment Gauge	52	Steel	Purchase
44196	Alignment Gauge	96	Steel	Purchase
44152-10	Alignment Gauge	52	Steel	Rent
44196-10	Alignment Gauge	96	Steel	Rent



**QUICK-POINT® CLAMPING STUDS**

ITEM NO.	TYPE	SUITABLE GRID SIZE	DIAMETER	TOP DIAMETER	SPACER HEIGHT
45270	Clamping Studs	52	Ø 16 mm	-	-
45570	Clamping Studs	96	Ø 20 mm	-	-
45270-10	Spacer Studs	52	Ø 16 mm	Ø 24 mm	10 mm
45570-10	Spacer Studs	96	Ø 20 mm	Ø 28 mm	10 mm

**QUICK-POINT® ALIGNMENT ACCESSORIES**

ITEM NO.	TYPE	NORM	DIMENSIONS	FOR SCREW TYPE (DIN 84 OR 912)
452014	Slot key, loose	DIN 6323	20 to 14 mm	-
452018	Slot key, loose	DIN 6323	20 to 18 mm	-
452214	Slot Key for axial alignment	-	14 × 22 mm	M 6 × 16
452218	Slot Key for axial alignment	-	18 × 22 mm	M 6 × 16
451230	Centring stud	-	Ø 12 to 30 mm	-
451232	Centring stud	-	Ø 12 to 32 mm	-
451250	Centring stud	-	Ø 12 to 50 mm	-
452530	Centring stud	-	Ø 25 to 30 mm	-
452532	Centring stud	-	Ø 25 to 32 mm	-
452550	Centring stud	-	Ø 25 to 50 mm	-
455030	Centring stud	-	Ø 50 to 30 mm	-
455032	Centring stud	-	Ø 50 to 32 mm	-
455050	Centring stud	-	Ø 50 to 50 mm	-
45000-09	Bushing	-	Ø 12 × 12 mm	M 10
65191-04	Bushing	-	Ø 12 × 12 mm	M 8
65191-05	Bushing	-	Ø 16 × 15 mm	M 10

**QUICK-POINT® COVER DISCS**

ITEM NO.	TYPE	MATERIAL	DIAMETER
45008-15	Covers discs	Plastic	Ø 15 mm
45008-20	Covers discs	Plastic	Ø 20 mm
45008-27	Covers discs	Plastic	Ø 27 mm

**QUICK-POINT® COVER PLUGS**

ITEM NO.	TYPE	MATERIAL	FOR GRID SIZE
45052-20	Cover plugs	Plastic	52
45096-20	Cover plugs	Plastic	96
45052-30	Cover plugs	Steel	52
45096-30	Cover plugs	Steel	96

**QUICK-POINT® ZERO-POINT SYSTEM ACCESSORIES**

ITEM NO.	TYPE	FOR GRID SIZE	SPECIFICS
45000-30	Cover Plug Remover	52 / 96	Magnet for the removal of steel cover plugs
66605	Handle Bar, Aluminium	52	incl. 2 clamping studs Ø 16 mm
46081	Handle Bar, Aluminium	96	incl. 2 clamping studs Ø 20 mm



1002

60 50 40 30 20 10 0 10 20 30 40 50

**LANG**

Makro-Grip®  5-Achs-Spa  
Art. Nr. 4815

**LANG**

20x14

# WORKHOLDING



# Makro-Grip® Stamping Technology

## MAKRO-GRIP® STAMPING UNIT FOR WORKBENCHES



ITEM NO.	TYPE	TYPE OF STAMPING JAWS	MATERIAL HARDNESS	MAX. STAMPING RANGE
41200	Standard	Standard	up to 35 HRC	245 mm
41200-HE	Standard	High-End	up to 45 HRC	245 mm
41350	Extended	Standard	up to 35 HRC	355 mm
41350-HE	Extended	High-End	up to 45 HRC	355 mm

## STAMPING TROLLEY WITH MAKRO-GRIP® STAMPING UNIT



ITEM NO.	TYPE	TYPE OF STAMPING JAWS	MATERIAL HARDNESS	MAX. STAMPING RANGE
41521	Standard	Standard	up to 35 HRC	245 mm
41521-HE	Standard	High-End	up to 45 HRC	245 mm

## STAMPING TROLLEY WITH MAKRO-GRIP® STAMPING UNIT, EXTENDED, ON T-SLOT PLATE



ITEM NO.	TYPE	TYPE OF STAMPING JAWS	MATERIAL HARDNESS	MAX. STAMPING RANGE
41400	Extended	Standard	up to 35 HRC	355 mm
41400-HE	Extended	High-End	up to 45 HRC	355 mm

## STAMPING TROLLEY WITH MAKRO-GRIP® DUAL STAMPING UNIT, EXTENDED, ON T-SLOT-PLATE



ITEM NO.	TYPE	TYPE OF STAMPING JAWS	MATERIAL HARDNESS	MAX. STAMPING RANGE
41402	Extended	Standard	up to 35 HRC	2 × 355 mm
41402-HE	Extended	High-End	up to 45 HRC	2 × 355 mm

## MAKRO-GRIP® ADDITIONAL STAMPING VICE



ITEM NO.	TYPE	TYPE OF STAMPING JAWS	MATERIAL HARDNESS	MAX. STAMPING RANGE
41140	Additional stamping vice, extended	Standard	up to 35 HRC	355 mm
41140-HE	Additional stamping vice, extended	High-End	up to 45 HRC	355 mm

## MAKRO-GRIP® STAMPING JAWS



ITEM NO.	TYPE	TYPE OF STAMPING JAWS	MATERIAL HARDNESS
41111	Stamping Jaws	Standard	up to 35 HRC
41112	Stamping Jaws	High-End	up to 45 HRC

## RECONDITIONING MAKRO-GRIP® STAMPING JAWS



ITEM NO.	TYPE	TYPE OF STAMPING JAWS	MATERIAL HARDNESS
41111-01	Reconditioning	Standard	up to 35 HRC
41112-01	Reconditioning	High-End	up to 45 HRC

**MAKRO-4GRIP STAMPING JAWS**



ITEM NO.	TYPE	SUITABLE FOR
51111	Makro-4Grip Stamping Jaws	All Makro-Grip® stamping units
51111-40	Makro-4Grip Stamping inserts (4 pcs.)	Makro-4Grip stamping jaws

**MAKRO-GRIP® STAMPING TECHNOLOGY ACCESSORIES**



ITEM NO.	TYPE	SUITABLE FOR
41010	Centre marking tool	All Makro-Grip® stamping units
41010-01	Spare marking stud	Centre marking tool
41020	Gauging Blocks for measuring wear of stamping jaws	All stamping jaw types

# Makro·Grip® Raw Part Clamping

## MAKRO·GRIP® 5-AXIS VICES



ITEM NO.	JAW WIDTH	BASE LENGTH	CLAMPING RANGE	MAX. TORQUE	SUITABLE FOR QUICK-POINT®
48085-46	46 mm	102 mm	0 – 85 mm	70 Nm	52
48120-46	46 mm	130 mm	0 – 120 mm	70 Nm	52
48085-77	77 mm	102 mm	0 – 85 mm	70 Nm	52
48120-77	77 mm	130 mm	0 – 120 mm	70 Nm	52
48160-77	77 mm	170 mm	0 – 160 mm	70 Nm	52
48200-77	77 mm	210 mm	0 – 200 mm	70 Nm	52
48155-77	77 mm	160 mm	0 – 155 mm	100 Nm	96
48205-77	77 mm	210 mm	0 – 205 mm	100 Nm	96
48155-125	125 mm	160 mm	0 – 155 mm	100 Nm	96
48205-125	125 mm	210 mm	0 – 205 mm	100 Nm	96
48255-125	125 mm	260 mm	0 – 255 mm	100 Nm	96
48305-125	125 mm	310 mm	0 – 305 mm	100 Nm	96
48355-125	125 mm	360 mm	0 – 355 mm	100 Nm	96

## SPARE JAWS FOR MAKRO·GRIP® 5-AXIS VICE



ITEM NO.	JAW WIDTH	TYPE	SUITABLE FOR
48085-4620	46 mm	serrated	48085-46
48085-4622	46 mm	with plain clamping step	48085-46
48077-4620	46 mm	serrated	48120-46
48077-4622	46 mm	with plain clamping step	48120-46
48085-7720	77 mm	serrated	48085-77
48085-7722	77 mm	with plain clamping step	48085-77
48077-7720	77 mm	serrated	48120-77   48160-77   48200-77
48077-7722	77 mm	with plain clamping step	48120-77   48160-77   48200-77
48125-7720	77 mm	serrated	All Makro-Grip® 125 with jaw width 77 mm
48125-7722	77 mm	with plain clamping step	All Makro-Grip® 125 with jaw width 77 mm
48125-2520	125 mm	serrated	All Makro-Grip® 125 with jaw width 125 mm
48125-2522	125 mm	with plain clamping step	All Makro-Grip® 125 with jaw width 125 mm

## MAKRO·4GRIP CLAMPING JAWS



ITEM NO.	JAW WIDTH	SUITABLE FOR	CLAMPING RANGE
57708-20	52 mm	All Makro-Grip® 77	Ø 36 – 115 mm
57711-20	77 mm	All Makro-Grip® 77	Ø 54 – 115 mm
52515-20	90 mm	All Makro-Grip® 125	Ø 115 – 180 mm
52530-20	128 mm	All Makro-Grip® 125	Ø 180 – 300 mm

Note: The suitable Makro-4Grip stamping jaws (Item No. 51111) can be found on page 13.

**SPARE SPINDLES WITH CENTRE PIECE**



ITEM NO.	SPINDLE LENGTH + Ø	SUITABLE FOR
4877100	100 mm / Ø 16 mm	All LANG vices 77 with a length of 102 mm
4877135	135 mm / Ø 16 mm	All LANG vices 77 with a length of 130 mm
4877175	175 mm / Ø 16 mm	All LANG vices 77 with a length of 170 mm
4877215	215 mm / Ø 16 mm	All LANG vices 77 with a length of 210 mm
4825164	164 mm / Ø 20 mm	All LANG vices 125 with a length of 160 mm
4825214	214 mm / Ø 20 mm	All LANG vices 125 with a length of 210 mm
4825264	264 mm / Ø 20 mm	All LANG vices 125 with a length of 260 mm
4825314	314 mm / Ø 20 mm	All LANG vices 125 with a length of 310 mm
4825364	364 mm / Ø 20 mm	All LANG vices 125 with a length of 360 mm

**CENTRE JAW AND SPINDLE FOR MAKRO-GRIP® 5-AXIS VICE**



ITEM NO.	SPINDLE LENGTH + Ø	WIDTH CENTRE JAW	CLAMPING RANGE	SUITABLE FOR
48085-TG4617	100 mm / Ø 16 mm	17 mm	2 × 35 mm	48085-46
48085-TG4627	100 mm / Ø 16 mm	27 mm	2 × 30 mm	48085-46
48120-TG4617	135 mm / Ø 16 mm	17 mm	2 × 50 mm	48120-46
48120-TG4627	135 mm / Ø 16 mm	27 mm	2 × 45 mm	48120-46
48085-TG7717	100 mm / Ø 16 mm	17 mm	2 × 35 mm	48085-77
48085-TG7727	100 mm / Ø 16 mm	27 mm	2 × 30 mm	48085-77
48120-TG7717	135 mm / Ø 16 mm	17 mm	2 × 50 mm	48120-77
48120-TG7727	135 mm / Ø 16 mm	27 mm	2 × 45 mm	48120-77
48160-TG7717	175 mm / Ø 16 mm	17 mm	2 × 70 mm	48160-77
48160-TG7727	175 mm / Ø 16 mm	27 mm	2 × 65 mm	48160-77
48200-TG7717	215 mm / Ø 16 mm	17 mm	2 × 90 mm	48200-77
48200-TG7727	215 mm / Ø 16 mm	27 mm	2 × 85 mm	48200-77
48155-TG7727	164 mm / Ø 20 mm	27 mm	2 × 60 mm	48155-77
48155-TG2527	164 mm / Ø 20 mm	27 mm	2 × 60 mm	48155-125
48205-TG7727	214 mm / Ø 20 mm	27 mm	2 × 85 mm	48205-77
48205-TG2527	214 mm / Ø 20 mm	27 mm	2 × 85 mm	48205-125
48255-TG2527	264 mm / Ø 20 mm	27 mm	2 × 110 mm	48255-125
48305-TG2527	314 mm / Ø 20 mm	27 mm	2 × 135 mm	48305-125
48355-TG2527	364 mm / Ø 20 mm	27 mm	2 × 160 mm	48355-125

**MAKRO-GRIP® 5-AXIS ACCESSORIES**



ITEM NO.	TYPE	HEXAGON	SUITABLE FOR	WRENCH SIZE
45505	Wrench	Internal hexagon	Makro-Grip® 77 / 125	5 mm
45500	Wrench	External hexagon	Makro-Grip® 77	12 mm
45501	Wrench	External hexagon	Makro-Grip® 125	15 mm
45508	Hexagon socket	External hexagon	Makro-Grip® 77	12 mm
45509	Hexagon socket	External hexagon	Makro-Grip® 125	15 mm
47005	Cordless drill attachment	Internal hexagon	Makro-Grip® 77 / 125	5 mm

# Makro-Grip® Ultra

Note: Base Set includes Quick-Point® clamping studs, spindle and centring plates. Hexagon wrenches (size 5 and 19) and a cover plug remover are also included with every Base Set. Included in delivery of Base Sets 610 and 810 are two connection plates as well.

## MAKRO-GRIP® ULTRA BASE-SETS



ITEM NO.	DESCRIPTION	HEIGHT	SPINDLE LENGTH	CLAMPING RANGE
81400	Base-Set 410 S	45 mm	441 mm	40 – 410 mm
81415	Base-Set 410 M	109 mm	441 mm	40 – 410 mm
81423	Base-Set 410 L	189 mm	441 mm	40 – 410 mm
81600	Base-Set 610 S	45 mm	617 mm	40 – 610 mm
81615	Base-Set 610 M	109 mm	617 mm	40 – 610 mm
81623	Base-Set 610 L	189 mm	617 mm	40 – 610 mm
81800	Base-Set 810 S	45 mm	825 mm	40 – 810 mm
81815	Base-Set 810 M	109 mm	825 mm	40 – 810 mm
81823	Base-Set 810 L	189 mm	825 mm	40 – 810 mm

## MAKRO-GRIP® CLAMPING JAWS



ITEM NO.	JAW WIDTH	TYPE	CLAMPING DEPTH
81483	125 mm	Makro-Grip® serration	3 mm
81485	125 mm	Makro-Grip® serration	5 mm
81483-TG	125 mm	Makro-Grip® centre jaw with serration	3 mm
81485-TG	125 mm	Makro-Grip® centre jaw with serration	5 mm

## MAKRO-GRIP® ULTRA BASE JAWS



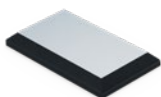
ITEM NO.	JAW WIDTH	TYPE
81440	125 mm	Makro-Grip® Ultra Base jaw
81440-TG	125 mm	Makro-Grip® Ultra Centre-Base jaw

## MAKRO-GRIP® ULTRA TOP JAWS



ITEM NO.	JAW WIDTH	TYPE	CLAMPING DEPTH	MATERIAL
81450	125 mm	Avanti top jaw with plain clamping step	16 mm	Steel, hardened
81450-TG	125 mm	Avanti centre top jaw with plain clamping step	16 mm	Steel, hardened
44258-46	125 mm	Avanti top jaw, height 46 mm	max. 39 mm	Steel, soft
44258-76	125 mm	Avanti top jaw, height 76 mm	max. 69 mm	Steel, soft
44259-46	125 mm	Avanti top jaw, height 46 mm	max. 39 mm	Aluminium
44259-76	125 mm	Avanti top jaw, height 76 mm	max. 69 mm	Aluminium

## MAKRO-GRIP® ULTRA SUPPORT JAWS



ITEM NO.	JAW WIDTH	HEIGHT	SUITABLE FOR	MATERIAL
81403	125 mm	16 mm	81483 / 81450	Steel, soft
81405	125 mm	14 mm	81485	Steel, soft

## MAKRO-GRIP® ULTRA THREADED CAPS



ITEM NO.	DESCRIPTION	SUITABLE FOR
81080	Threaded cap, right	81483, 81485, 81440
81090	Threaded cap, left	81483, 81485, 81440

## MAKRO-GRIP® ULTRA PLATES



ITEM NO.	DESCRIPTION	APPLICATION
81010	Centring plate	Single-part clamping, concentric
81040	Centring plate	Multiple-clamping, compensating
81015	Connection plate	Connection of two base bodys



**MAKRO-GRIP® ULTRA BASE BODIES**



ITEM NO.	HEIGHT	LENGTH	FOR JAW WIDTH	SUITABLE FOR QUICK-POINT®
81011	45 mm	96 mm	125 mm	96
81021	45 mm	192 mm	125 mm	96
81012	109 mm	96 mm	125 mm	96
81022	109 mm	192 mm	125 mm	96
81013	189 mm	96 mm	125 mm	96
81023	189 mm	192 mm	125 mm	96

**MAKRO-GRIP® ULTRA SPINDLES**



ITEM NO.	DESCRIPTION	LENGTH
81004	Spindle unit 410	441 mm
81006	Spindle unit 610	617 mm
81008	Spindle unit 810	825 mm

**HYDRO-SUP SCREW JACK**



ITEM NO.	DESCRIPTION	SUPPORT HEIGHT
81586	Hydraulic screw jack	85 - 89 mm
81515	Spacer for system height "M"	148 - 152 mm
81523	Spacer for system height "L"	228 - 232 mm

**HYDRO-SUP HEXAGON WRENCH**



ITEM NO.	LENGTH	WRENCH SIZE
45512	230 mm	12 mm

**MAKRO-GRIP® ULTRA ACCESSORIES**



ITEM NO.	TYPE	HEXAGON	SUITABLE FOR	WRENCH SIZE
81500	Plastic covers for base bodies (20 pcs.)	-	All Ultra base bodies	-
45505	Wrench	Internal hexagon	Threaded caps	5 mm
45519	Wrench	External hexagon	Spindle units	19 mm
45511	Hexagon socket	External hexagon	Spindle units	19 mm
45000-30	Cover plug remover	-	Threaded caps	-

**MAKRO-GRIP® ULTRA STAMPING UNITS**



ITEM NO.	DESCRIPTION	BASE PLATE DIMENSIONS	STAMPING JAWS TYPE	MAX. STAMPING RANGE
83420-HE	Stamping unit	680 × 612 mm	High-End	420 mm
83630-HE	Stamping unit	880 × 804 mm	High-End	630 mm
83810-HE	Stamping unit	1080 × 996 mm	High-End	810 mm

**MAKRO-GRIP® ULTRA STAMPING JAWS**



ITEM NO.	VERSION	TYPE	FOR MATERIALS
41112-06	Stamping jaws without parallels	High-End	bis 45 HRC

**MAKRO-GRIP® ULTRA JAW PARALLELS**



ITEM NO.	CLAMPING DEPTH	SUITABLE FOR
41111-0308	3 mm	41112-06
41111-0508	5 mm	41112-06

# Conventional Workholding

## AVANTI



ITEM NO.	JAW WIDTH	BASE LENGTH	MAX. CLAMPING RANGE	MAX. TORQUE	SUITABLE FOR QUICK-POINT®
44085-46	46 mm	102 mm	97 mm	70 Nm	52
44120-46	46 mm	130 mm	125 mm	70 Nm	52
44120-77	77 mm	130 mm	125 mm	70 Nm	52
44160-77	77 mm	170 mm	165 mm	70 Nm	52
44200-77	77 mm	210 mm	205 mm	70 Nm	52
44205-125	125 mm	210 mm	205 mm	100 Nm	96
44255-125	125 mm	260 mm	255 mm	100 Nm	96
44305-125	125 mm	310 mm	305 mm	100 Nm	96
44355-125	125 mm	360 mm	355 mm	100 Nm	96

## AVANTI BASE JAWS



ITEM NO.	SUITABLE FOR	DIMENSIONS
44771-46	All Avanti 77 with jaw width 46 mm	55 × 36 mm
44771-77	All Avanti 77 with jaw width 77 mm	77 × 57 mm
44251-125	All Avanti with Jaw width 125 mm	125 × 69 mm

## AVANTI CENTRE BASE JAWS + SPINDLES



ITEM NO.	SPINDLE LENGTH / Ø	SUITABLE FOR
44120-TG46	135 mm / Ø 16 mm	44120-46
44200-TG77	215 mm / Ø 16 mm	44200-77
44255-TG125	264 mm / Ø 20 mm	44255-125
44305-TG125	314 mm / Ø 20 mm	44305-125
44355-TG125	364 mm / Ø 20 mm	44355-125

## AVANTI TOP JAWS



ITEM NO.	SUITABLE FOR	DIMENSIONS	MATERIAL
44468-26	Avanti 77 with jaw width 46 mm	57 × 38 × 26 mm	Steel (16 MnCr 5)
44469-26	Avanti 77 with jaw width 46 mm	57 × 38 × 26 mm	Aluminium (F 50)
44778-36	Avanti 77 with jaw width 77 mm	78 × 58 × 36 mm	Steel (16 MnCr 5)
44779-36	Avanti 77 with jaw width 77 mm	78 × 58 × 36 mm	Aluminium (F 50)
44778-56	Avanti 77 with jaw width 77 mm	78 × 58 × 56 mm	Steel (16 MnCr 5)
44779-56	Avanti 77 with jaw width 77 mm	78 × 58 × 56 mm	Aluminium (F 50)
44258-46	Avanti 125 with jaw width 125 mm	126 × 77 × 46 mm	Steel (16 MnCr 5)
44259-46	Avanti 125 with jaw width 125 mm	126 × 77 × 46 mm	Aluminium (F 50)
44258-76	Avanti 125 with jaw width 125 mm	126 × 77 × 76 mm	Steel (16 MnCr 5)
44259-76	Avanti 125 with jaw width 125 mm	126 × 77 × 76 mm	Aluminium (F 50)

**PROFILO**



ITEM NO.	JAW WIDTH	BASE LENGTH	MAX. CLAMPING RANGE	MAX. TORQUE	SUITABLE FOR QUICK-POINT®
49010-77	112 mm	102 mm	97 mm	70 Nm	52
49040-77	112 mm	130 mm	125 mm	70 Nm	52
49080-77	112 mm	170 mm	165 mm	70 Nm	52
49120-77	112 mm	210 mm	205 mm	70 Nm	52
49050-125	160 mm	160 mm	155 mm	100 Nm	96
49100-125	160 mm	210 mm	205 mm	100 Nm	96
49150-125	160 mm	260 mm	255 mm	100 Nm	96
49200-125	160 mm	310 mm	305 mm	100 Nm	96
49250-125	160 mm	360 mm	355 mm	100 Nm	96

**PROFILO BASE JAWS**



ITEM NO.	SUITABLE FOR	DIMENSIONS
49077	All Profilo 77	112 × 46 mm
49125	All Profilo 125	160 × 57 mm

**PROFILO CENTRE BASE JAWS + SPINDLES**



ITEM NO.	SPINDLE LENGTH / Ø	SUITABLE FOR
49080-TG77	175 mm / Ø 16 mm	49080-77
49120-TG77	215 mm / Ø 16 mm	49120-77
49100-TG125	214 mm / Ø 20 mm	49100-125
49150-TG125	264 mm / Ø 20 mm	49150-125
49200-TG125	314 mm / Ø 20 mm	49200-125
49250-TG125	364 mm / Ø 20 mm	49250-125

**PROFILO TOP JAWS**



ITEM NO.	SUITABLE FOR	DIMENSIONS	MATERIAL
49778	Profilo 77	112 × 57 × 36 mm	Steel (16 MnCr 5)
49779	Profilo 77	112 × 57 × 36 mm	Aluminium (F 50)
49258	Profilo 125	160 × 57 × 47 mm	Steel (16 MnCr 5)
49259	Profilo 125	160 × 57 × 47 mm	Aluminium (F 50)

**VARIO-TEC**

ITEM NO.	JAW WIDTH	BASE LENGTH	MAX. CLAMPING RANGE	MAX. TORQUE	SUITABLE FOR QUICK-POINT®
42057-77	77 mm	130 mm	57 mm	70 Nm	52
42097-77	77 mm	170 mm	97 mm	70 Nm	52
42137-77	77 mm	210 mm	137 mm	70 Nm	52
42102-125	125 mm	210 mm	100 mm	100 Nm	96
42152-125	125 mm	260 mm	150 mm	100 Nm	96
42202-125	125 mm	310 mm	200 mm	100 Nm	96
42252-125	125 mm	360 mm	250 mm	100 Nm	96

**VARIO-TEC JAWS**

ITEM NO.	JAW WIDTH	SUITABLE FOR	DIMENSIONS
42018-77	77 mm	All Vario-Tec 77	77 × 27 mm
42018-125	125 mm	All Vario-Tec 125	125 × 40 mm

**VARIO-TEC ACCESSORIES**

ITEM NO.	TYPE	SIZE	SUITABLE FOR
20000	Spare pins	Ø 4 mm	Vario-Tec 77
20001	Spare pins	Ø 6 mm	Vario-Tec 125
200009	O-Rings	Ø 2 × 1,5 mm	Vario-Tec 77 Spare pins
200010	O-Rings	Ø 3,5 × 2 mm	Vario-Tec 125 Spare pins
20004	Compressed air gun	universal	Vario-Tec 77 / 125

**VASTO-CLAMP 6-JAW CHUCK**

ITEM NO.	TYPE	DIMENSIONS	CLAMPING RANGE	MAX. TORQUE	SUITABLE FOR QUICK-POINT®
59616	Vasto-Clamp 96	210 × 155 × 57 mm	10 – 160 mm	30 Nm	96

**VASTO-CLAMP TOP JAWS**

ITEM NO.	TYPE	DIMENSIONS (WIDTH X HEIGHT)	CLAMPING DEPTH	CLAMPING RANGE	MATERIAL
59616-60	Gripping jaws, hard	18 × 13 mm	5 mm	30 – 120 mm	Steel
59616-61	Gripping jaws, hard	18 × 13 mm	5 mm	75 – 160 mm	Steel
59616-62	Top jaws, soft	18 × 29 mm	max. 24 mm	10 – 160 mm	Steel
59616-63	Top jaws, soft	18 × 29 mm	max. 24 mm	10 – 160 mm	Aluminium

**PRECI-POINT COLLET CHUCKS**



ITEM NO.	SUITABLE FOR	DIMENSIONS	CLAMPING RANGE	SUITABLE FOR QUICK-POINT®
41052	ER 50	Ø 99 × 111 mm	6 – 34 mm	52
41032	ER 32	Ø 98 × 92 mm	3 – 20 mm	52

**PRECI-POINT WRENCHES**



ITEM NO.	SUITABLE FOR	MATERIAL
41052-03	ER 50	Steel
41032-03	ER 32	Steel

**CONVENTIONAL WORKHOLDING ACCESSORIES**



ITEM NO.	TYPE	HEXAGON	WRENCH SIZE	SUITABLE VICE SIZE
45505	Wrench	Internal hexagon	5 mm	77 / 125
45500	Wrench	External hexagon	12 mm	77
45501	Wrench	External hexagon	15 mm	125
45508	Hexagon socket	External hexagon	12 mm	77
45509	Hexagon socket	External hexagon	15 mm	125
47005	Cordless drill attachment	Internal hexagon	5 mm	77 / 125





# AUTOMATION

# RoboTrex Automation System

## ROBOTREX AUTOMATION SYSTEM



ITEM NO.	SYSTEM SIZE	MAX. STORAGE CAPACITY	WORKPIECE WEIGHT	FOOTPRINT
66000	52	168 Vices	max. 12 kg	from 1.70 × 2.20 m
64000	96	64 Vices	max. 25 kg (optionally 45 kg)	from 2.00 × 2.70 m

## ROBOTREX AUTOMATION TROLLEY



ITEM NO.	SYSTEM SIZE	STORAGE CAPACITY	MAX. WORKPIECE SIZE WHEN FULLY EQUIPPED
66030	52	30 Vices	120 × 120 × 100 mm
66042	52	42 Vices	120 × 100 × 70 mm
64015	96	15 Vices	205 × 205 × 90 mm
64016	96	16 Vices	205 × 150 × 150 mm

## ROBOTREX ZERO-POINT CLAMPING SYSTEM



ITEM NO.	SYSTEM SIZE	DIMENSIONS	ACTUATION	SUITABLE GRIPPER
66500	52	Ø 157 × 37 mm	mechanical	66801 / 66930
66600	52	Ø 210 × 157 × 68 mm	pneumatic	66900 / 66950
64500	96	Ø 246 × 80 mm	pneumatic	64850

## ROBOT GRIPPERS AND INTERFACE



ITEM NO.	GRID	TYPE	ACTUATION	SUITABLE FOR	WORKPIECE WEIGHT
66930	52	Gripper, new	mechanical	66500	max. 12 kg
66801	52	Gripper, old	mechanical	66500	max. 12 kg
66900	52	Gripper	pneumatic	66600	max. 12 kg
64266	96	Gripper Exchange Interface	-	66950 / 64850	-
66950	96	Gripper	pneumatic	66600	max. 15 kg
64850	96	Gripper	pneumatic	64500	25 kg (optionally: 45 kg)

## MAKRO-GRIP® 5-AXIS VICES FOR ROBOTREX



ITEM NO.	SUITABLE FOR SYSTEM SIZE	JAW WIDTH	BASE LENGTH	CLAMPING RANGE
48120-46	52	46 mm	130 mm	0 - 120 mm
48120-77	52	77 mm	130 mm	0 - 120 mm
68120-77*	52	77 mm	130 mm	0 - 120 mm
48205-77	96	77 mm	210 mm	0 - 205 mm
48205-125	96	125 mm	210 mm	0 - 205 mm

Note: In addition, all LANG vices with a base length of 130 mm (base width 77 mm) and 210 mm (base width 125 mm) can be used, as well as the Vasto-Clamp 6-jaw chuck.

## MAKRO-GRIP® MOBILE STORAGE UNIT



ITEM NO.	GRID	DIMENSIONS	STORAGE CAPACITY
61060	52 / 96	1,200 × 800 × 1,500 mm	max. 60 devices

\* 68120-77 = Makro-Grip® Night King



# Clean•Tec Chip Fan

## CLEAN•TEC 160



ITEM NO.	Ø WITH OPENED BLADES	RPM RANGE	SHANK-Ø
30160	160 mm	6,000 – 12,000 RPM	20 mm
34160	160 mm	6,000 – 12,000 RPM	3/4" (19.05 mm)

## CLEAN•TEC 260



ITEM NO.	Ø WITH OPENED BLADES	RPM RANGE	SHANK-Ø
30260	260 mm	5,000 – 8,000 RPM	20 mm
34260	260 mm	5,000 – 8,000 RPM	3/4" (19.05 mm)

## CLEAN•TEC 330



ITEM NO.	Ø WITH OPENED BLADES	RPM RANGE	SHANK-Ø
30330	330 mm	3,000 – 8,000 RPM	20 mm
34330	330 mm	3,000 – 8,000 RPM	3/4" (19.05 mm)

## SPARE PART KIT (4 WINGS, INCL. SPRINGS + PINS)



ITEM NO.	SUITABLE FOR
30164	30160
30264	30260
30334	30330

# Are you ready to make your production more efficient?

Benefit from our vast experience in workholding and automation. With our hands-on mentality we offer help and advice for our customers and know how to make the best of existing capabilities.

## → **Personal customer contact**

Get in touch by phone, e-mail, video conference or welcome our outside sales representative at your company.

## → **Experience the future live**

If you have a certain need for workholding and automation systems or if you are just looking for more detailed information about our products, you are welcome to visit one of our training technology centres

## → **Visit our website**

Learn more about our products and find out everything you need to know about our company on our website.

Visit us at [www.lang-technik.de](http://www.lang-technik.de)

## Imprint

**Title:**

LANG Product Index - July 2021

Date of Printing 07/2021

**Editor**

**LANG Technik GmbH**

**Albstraße 1-6**

**D-73271 Holzmaden**

**Phone: +49 7023 9585-0**

**Fax: +49 7023 9585-100**

**Internet: [www.lang-technik.de](http://www.lang-technik.de)**

**E-Mail: [info@lang-technik.de](mailto:info@lang-technik.de)**

**E-Mail Sales: [sales@lang-technik.de](mailto:sales@lang-technik.de)**

**Legal provisions:**

Copyright © 2021

LANG Technik GmbH

All rights reserved. Reprint, recording in online-services, internet and duplication on data carrier as CD ROM, DVD, etc. or in extracts are prohibited. Misprints, errors and changes are subject to modifications. All indications of weight are approximate values. Illustrations can vary from articles.



→ [facebook.com/langtechnik](https://facebook.com/langtechnik)

→ [instagram.com/langtechnik](https://instagram.com/langtechnik)

→ [twitter.com/langtechnik](https://twitter.com/langtechnik)

→ [youtube.com/user/LangTechnik](https://youtube.com/user/LangTechnik)

→ [linkedin.com/company/lang-technik](https://linkedin.com/company/lang-technik)